

fly to the island of Alderney

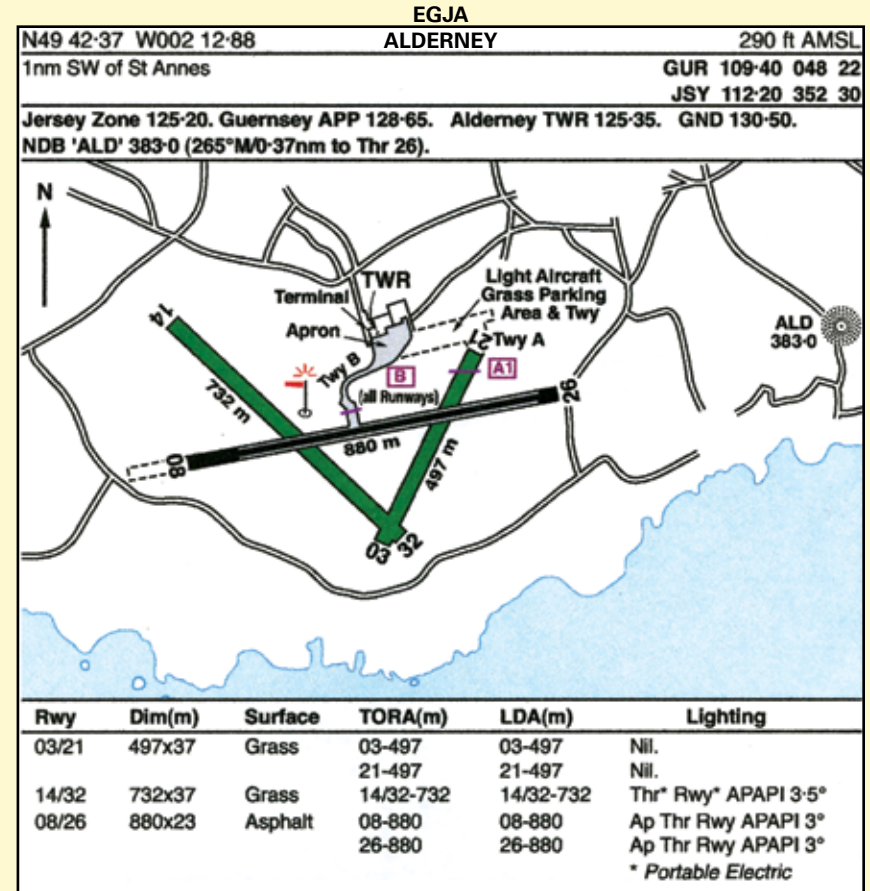
So close. So different.



in association with
AEL AVGAS

Photo Courtesy of Paul McConnell © 2005

ALDERNEY EGJA



Reproduced by kind permission of Pooleys Flight Guide © Not to be used for navigation purposes.

For general information concerning the Channel Islands Control Zone - Special VFR entry routes, the recommended VFR route from Solent CTA, fuel prices, operational hours, landing fees and local regulations - please check the UK AIP, NOTAMS, your copy of Pooleys Flight Guide or telephone 01481 822851.



Pathway to the Channel Islands and France

www.visitalderney.com
www.flyalderney.com

Cross Channel Check?
Overseas Adventure?
Time to Relax?

Whatever the reason,
fly into Alderney and enjoy
that famous Alderney
feeling which embraces you
the moment you land ...

Here in Alderney we try to ensure that your visit is free of the delays and frustrations experienced at bigger, busier airports, giving you more time to explore the many delights of our island. Beaches and restaurants abound, with a good choice of accommodation, most of which are within walking distance.

Alderney hosts the 'Island Air Races', held annually in September, at which the British Air Racing Championship is decided. The races are organised jointly by the Alderney Flying Club and the Royal Aero Club.

Contact the Alderney Flying Club for further details or visit
www.visitalderney.com
www.flyalderney.com or
www.airraceuk.co.uk

Alderney Airport

This is the closest Channel Island airport to the south coast of England. If routing via the Light Aircraft corridor and through France, it is only about 11nm across the water from the Normandy Coast.

With three operational runways, Alderney Airport is unique amongst the Channel Island airports.

Landing fees are reasonable and parking is normally free for 72 hours depending on aircraft weight, length of stay and/or fuel uplift. Most credit cards are accepted.

Visiting pilots must visit the Flight Clearance Office on arrival (adjacent to the Fire Station), where a self-briefing Flight Planning unit is available.

High visibility jackets must be worn by aircrew when airside. Aircraft must carry insurance.

VAT-free AvGas is available from AEL (AvGas) and a duty-free facility operates from the café in the airport terminal.

Local taxis operate to and from the airport.

Car hire is also available (a free phone facility is located in the arrivals area of the terminal building), so make sure you bring your driving licence with you.



Customs and Immigration

A full Customs and Immigration service is available during airport operating hours.

Flight Planning

Alderney Airport is situated within and governed by the regulations applicable to the Channel Islands CTR (Class [A] airspace) and Alderney CTR (Class [D] airspace).

Pilots who are unable to comply with full IFR requirements may, subject to weather minima and air traffic restrictions, be offered a Special VFR clearance within the CICZ. Details of SVFR restrictions will be found in the UK AIP or Pooleys Flight Guide.

AIRPORT NUMBERS

Alderney Control Tower	822851
Flight Clearance	822551
Customs	823573
Alderney Flying Club	823053
AEL (AvGas - 100LL)	824666
www.alderney-elec.com	

TOURISM NUMBERS

Tourist Information Centre	823737
Tourist Board	822811

USEFUL NUMBERS

Island Medical Centre	822077
Eagle Medical Practice	822494
Mignot Memorial Hospital	822822
Dental Practice	823131
Veterinary Clinic	822260
Police Station	824999

TAXI NUMBERS

ABC Taxis	823760
Island Taxis	823823
Central Taxis	07781 100830

Dialling Code (UK: 01481 - International: +44 1481)

BANKS & FOREIGN EXCHANGE

HSBC			Lloyds TSB		
NatWest		Channel Jumper			

= ATM Cash Dispensers = Foreign Exchange

